

Satellite Fusion Based Historical Inundation Estimates in Bangladesh

Jonathan Giezendanner¹, Rohit Mukherjee¹, Matthew Purri¹, Mitchell Thomas², Max Mauerman², Upmanu Lall³, Arifuzzaman Bhuyan⁴, A.K.M. Saiful Islam⁵, Beth Tellman¹

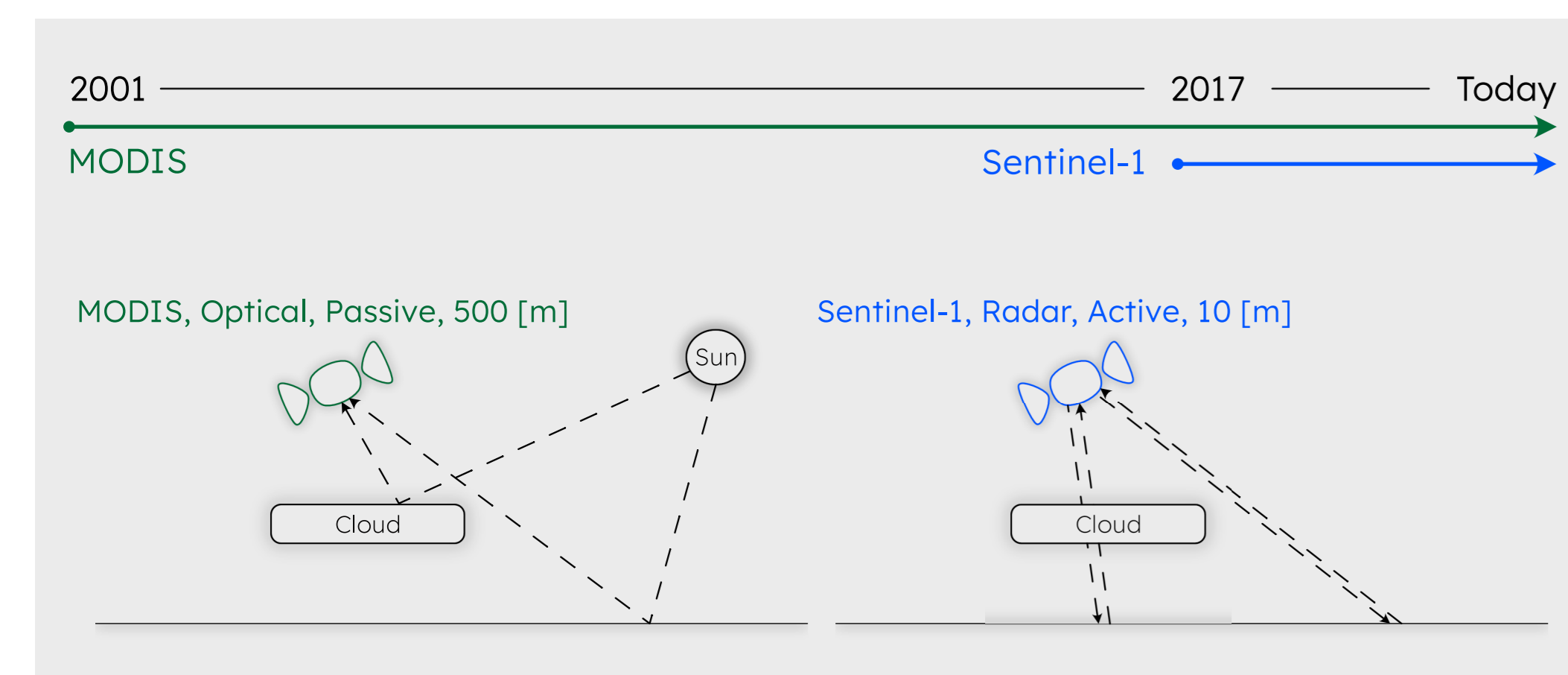


Why Historical Inundation Estimates?

- In Asia: 68 billion in losses in agricultural production, 60% due to floods (FAO 2015)
- Insurance can support farmers' sustainable development (Benami et al 2021)
- Payout based on **measurable proxy** for losses
- Payout issued when **pre-defined threshold** is reached
- **For Floods:** based on **Return Period vs Fractional Flooded Area** estimates
- Requires accurate historical estimate of **yearly maximum flood extent** (capture peaks)
- Requires long time series (**at least 20 years**)

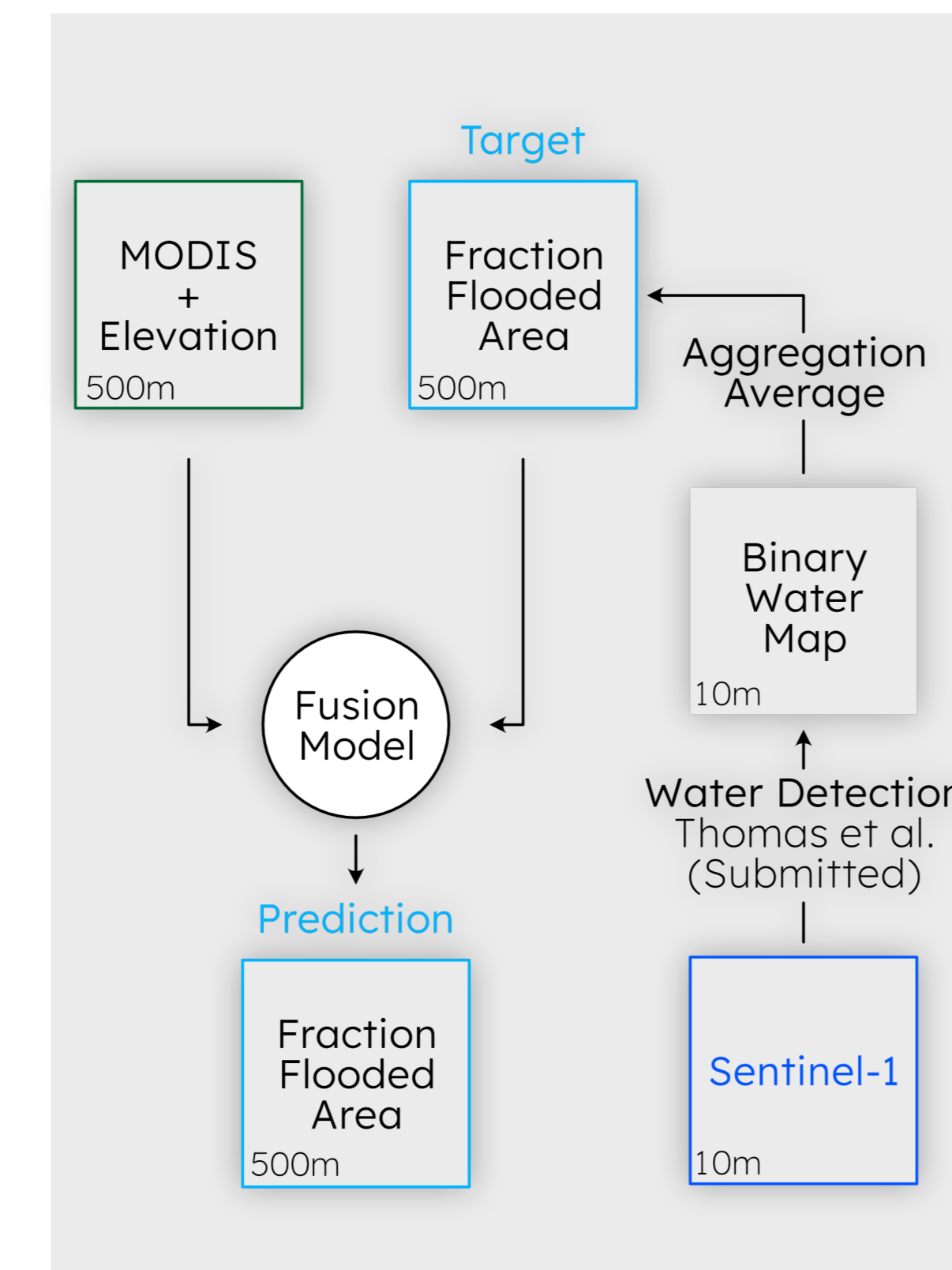
Mapping Floods over 20 Years

- Best Satellites for Flood detection (Radar, Sentinel-1, 10 m resolution) only available recently
- MODIS provides long time-series but only Optical, 500 m resolution

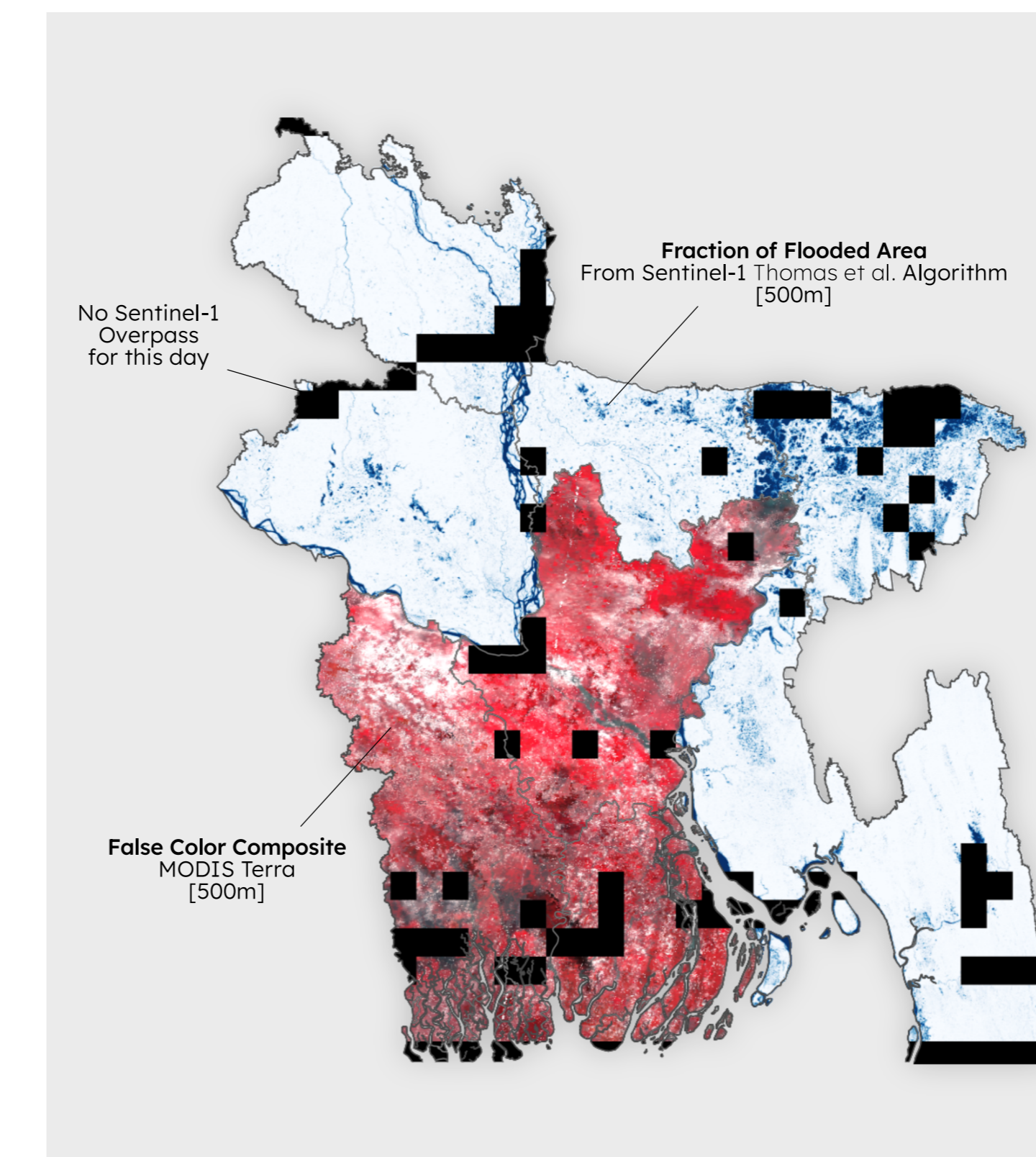


Goal Create historical (20+ years) time series of flooded areas over Bangladesh for return period estimates
 → Reproduce Sentinel-1 observed fraction of flooded area with MODIS data
 → Fusion algorithm

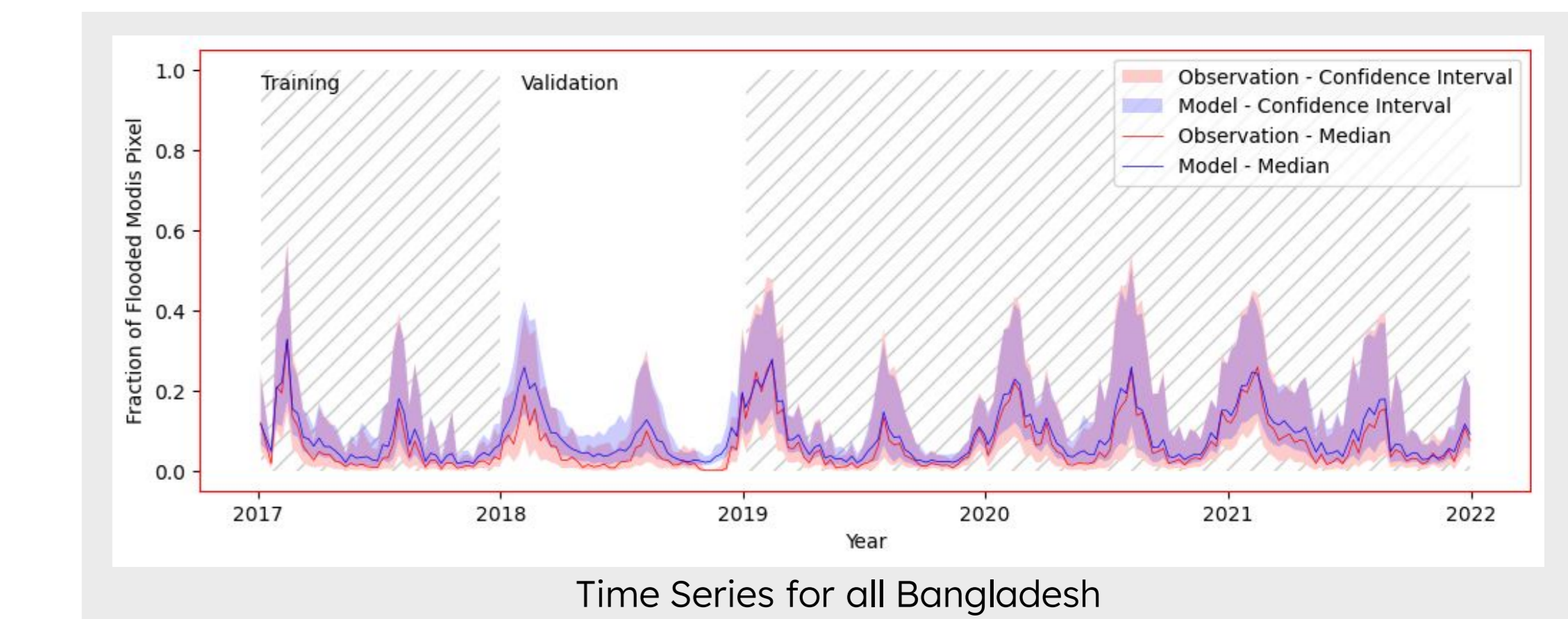
A Fusion Framework to Combine Data Sources



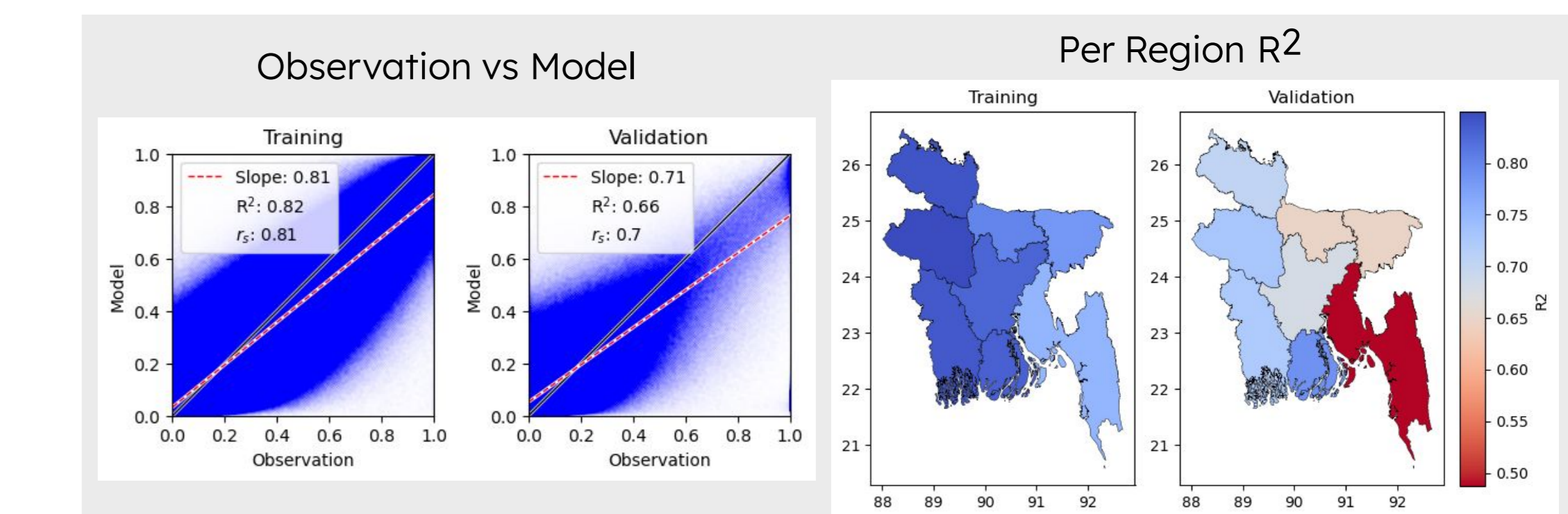
- Target:** Fraction Flooded Area at 500 meter resolution
- Based on Sentinel-1
 - Dynamic thresholding binary map at 10 [m] resolution Thomas et al., submitted
 - Fraction inundated area ($\in [0,1]$) for each MODIS pixel at 500 [m] resolution
- Features:**
- 8-Days MODIS Terra composite image at 500 [m] resolution
 - Elevation (FABDEM)



Trained Model



Overall R² of .66 for the validation

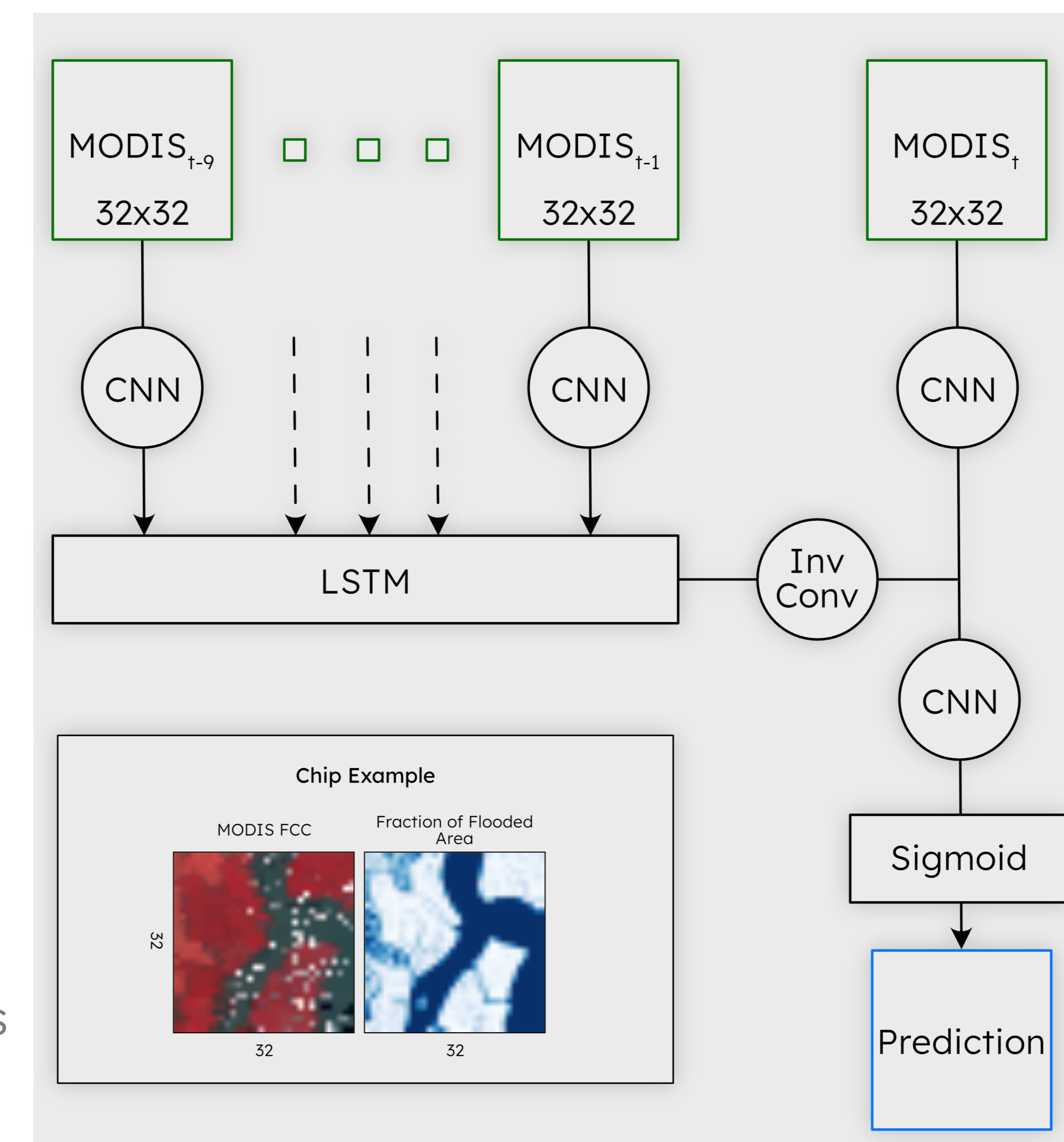


Combine CNNs and LSTM for Spatial and Temporal Context

Long-Short-Term-Memory (LSTM) coupled with Convolutional Neural Networks (CNNs):

For each day:

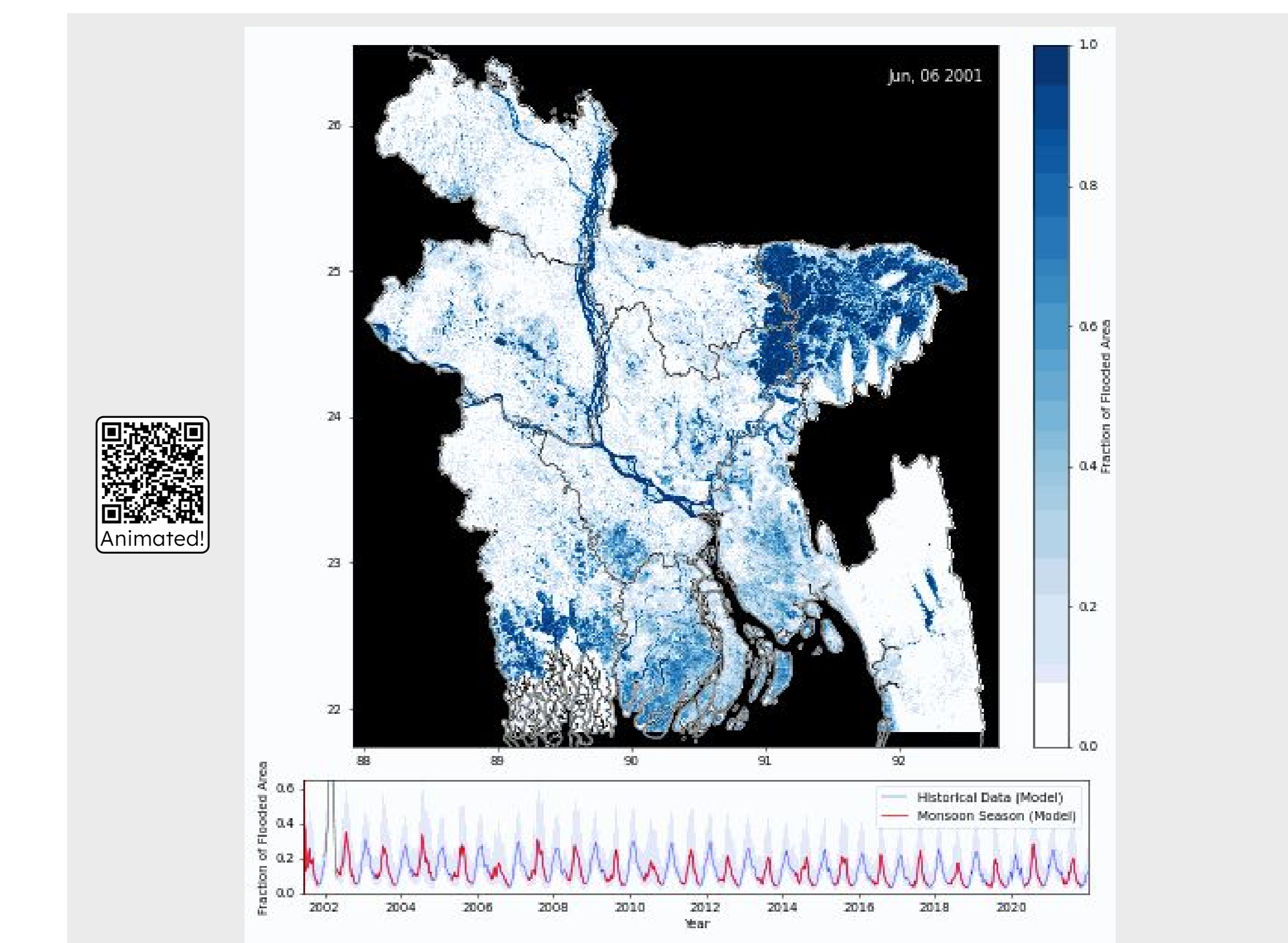
- The 10 MODIS images up to the event are run through a CNN (one network, same parameters)
 → This provides the spatial context
- The 9 previous CNN outputs are run through an LSTM
 → This provides the temporal context
- The LSTM output is combined with the CNN at time t and run through the last CNN to provide a prediction



Training and Testing:

- Each Chip is 32x32 pixels at 500 [m]
- The total dataset contains 150'946 chips
- Year 2018 is removed from the dataset for testing (21'487 chips)

Inferred Time Series



Future work:

- Per-year cross-validation
- Improve Mountain regions
- Longer LSTM to capture annual trends

Acknowledgements

This work is undertaken as part of the NASA New (Early Career) Investigators (NIP) Program (80NSSC21K1044)

Jonathan Giezendanner
Postdoctoral Researcher
University of Arizona

Social [Pixel] Lab
<https://beth-tellman.github.io>

✉ jonathan.giezendanner@gmail.com

🐦 @JoGiezi

📧 jgiezendanner.com

👤 GieziJo

